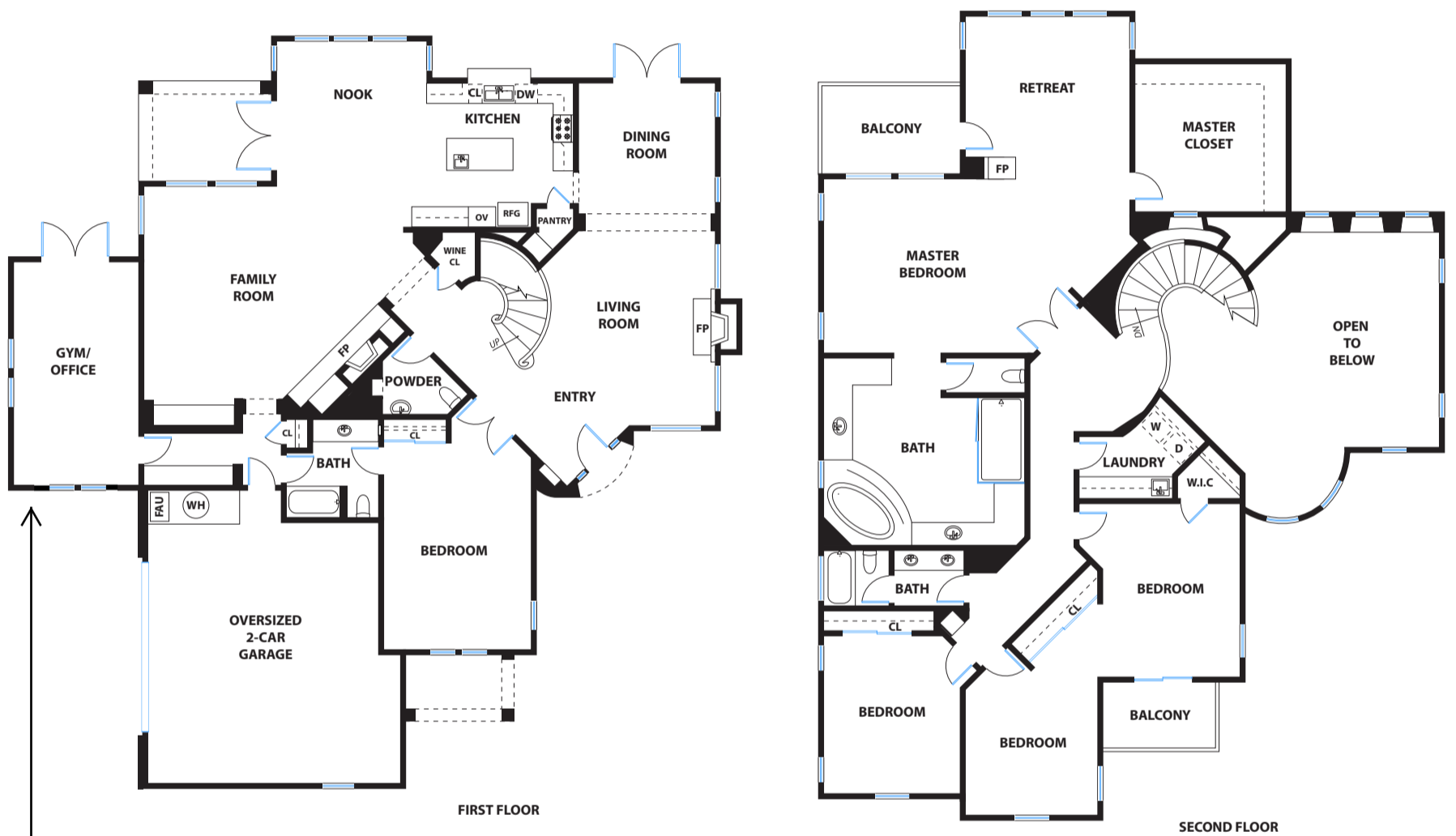


372 WINDMILL LANE

PETALUMA



NOTE: Current Gym/Office was an optional 3rd car garage at time of construction

PRESENTED BY : GARY AND ASHLEY BROWN

Realtor & Broker Associate

DRE #: 01171537 / 01299460

This floor plan was gathered from a third party source without further verification. Compass disclaims any and all representations as to the accuracy of this floor plan. Compass has not, and will not, verify square footage of residence. Prospective buyers are advised to verify this floor plan and square footage themselves and to retain the appropriate professionals to obtain advice or assistance.